

Using the Display Interface




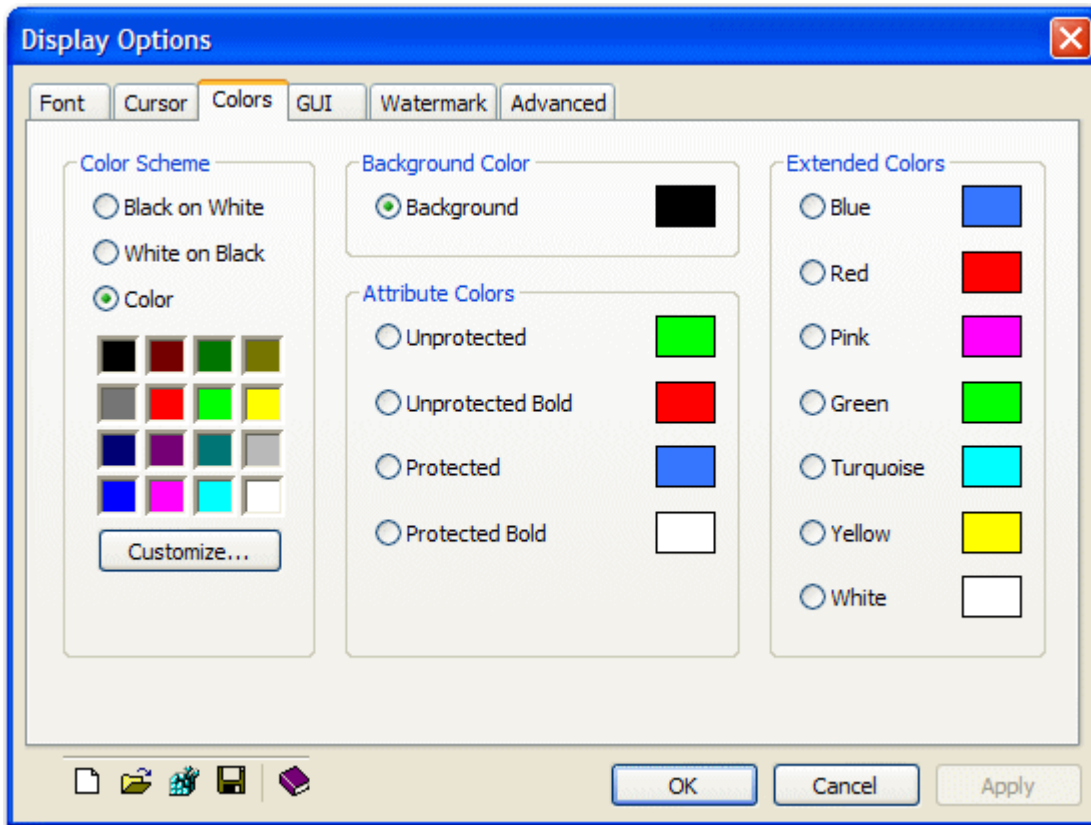
Display Options

How To Change the Display Colors

This procedure uses BlueZone Mainframe Display as an example.

Procedure


1. From the BlueZone **MenuBar** select **Options::Display**, or click the **Display** icon  on the BlueZone **ToolBar**. The **Display Options** dialog will be displayed.
2. Click the **Colors** tab. The Colors dialog will be displayed as shown here:



3. By default, the **Background** color is selected by default. This is a the "Active Selection". Note the radio button next to Background in the above example.
4. To change the background color, use your mouse to select the desired color form the color grid in the **Color Scheme** group. Click the **Apply** button to apply the new color.
5. To change the colors of the characters, use your mouse to select one of the items in the **Attribute Colors** group and make that attribute the "Active Selection".



NOTE There can only be one "Active Selection" at a time.

6. Once one of the **Attribute Colors** has been selected, use your mouse to select the desired color form the color grid in the **Color Scheme** group. Click the **Apply** button to apply the new color.
7. From the BlueZone **MenuBar** select **File::Save**, or click the File Save icon  to save your changes.



SEE [Display Options](#) for additional information.

Related Topics:

[Display Options](#)

BlueZone Display & Printer Help
Copyright © 1996 - 2009 Rocket Software, Inc. All rights reserved