



This one time installation instruction need to be followed if you are trying to access BluezoneV10 for the first time in your system :

Step 1:

Please connect to Bluezone using any of the below domains :

Description	URL
Web3270	https://wth.web3270.bz.nissan-ix.com
Web5250	https://wth.web5250-bz.na.nissan.biz

You can use any browser (Chrome, Firefox, Edge, Internet Explorer etc.)

Then select any session and click on connect:

Web3270: <https://wth.web3270.bz.nissan-ix.com>

Mainframe Selection

Web-To-Host-On-Demand Macro Conversion
If you need assistance converting your Host On-Demand macros, please contact the helpdesk at 800-514-8061.
For help on changing your keyboard mappings, click [here](#).
For help on changing your default screen colors, click [here](#).

Please select a choice for Mainframe and a choice for 3270 Model, then click Connect.

Mainframe:

- NCI1 (Canada)
- NMA1 (NMAC)
- NMC1 (Headquarters)
- NMC2 (Headquarters Development Test)
- NMM1 (Manufacturing)
- NMM2 (Manufacturing Dev Test)
- NNA0 (CAC)
- NNA1 (NTCNA)
- NNA2 (Service Provider)
- NMX1 (Mexico Prod)
- NMX2 (Mexico Test)

3270 Model:

- Mod 2 (24x80)
- Mod 5 (27x132)

CONNECT

Help Links:
[BlueZone Display & Printer Help](#)
[First Time Setup Instructions](#)

NISSAN

Web5250: <https://wth.web5250-bz.na.nissan.biz>

AS400 Host Selection

Web-To-Host-On-Demand Macro Conversion
If you need assistance converting your Host On-Demand macros, please contact the helpdesk at 800-514-8061.
For help on changing your keyboard mappings, click [here](#).
For help on changing your default screen colors, click [here](#).

Please select an AS/400 session then click Connect.

Session:

- NPBA4 (Baltimore PDC)
- NPC05 (Compton PDC)
- NPGR4 (Greenville PDC)
- NPME4 (Memphis PDC)
- NPME5 (Memphis LVC)
- NPSA4 (Sacramento PDC)
- NPSM4 (Smyrna PDC and NPRC)
- NRCH4 (Chicago PDC)
- NRDA4 (Dallas PDC)
- NRJA4 (Orlando PDC)
- NNEW4 (New York PDC)
- NMCHA01 (Nissan and Infiniti Production)
- NMCHA02 (Nissan and Infiniti Production)
- NMCHQB02 (Nissan and Infiniti Production)
- NPLE4 (Lebanon CCC)

CONNECT

Help Links:
[BlueZone Display & Printer Help](#)
[First Time Setup Instructions](#)

NISSAN



Step 2:

Next Scroll down to the web page and click on user installer link :

Rocket TE Web Deployment

Configure Bluezone Web to Host Terminal Emulator

First time user :

Please click and download the Open Web Launch utility from the link: [user installer](#)

Open the installer file and click next on each panel to accept default values and continue to install the utility.

Go to downloads section of browser and right click and select "Always open files of this type." and select the "Open Web Launch" from list of programs.

If you previously installed Open Web Launch, you can open the bzw2h.bzlp file to launch Rocket TE.

If you cannot locate the bzw2h.bzlp file, click [Launch File](#) to download and launch it again.

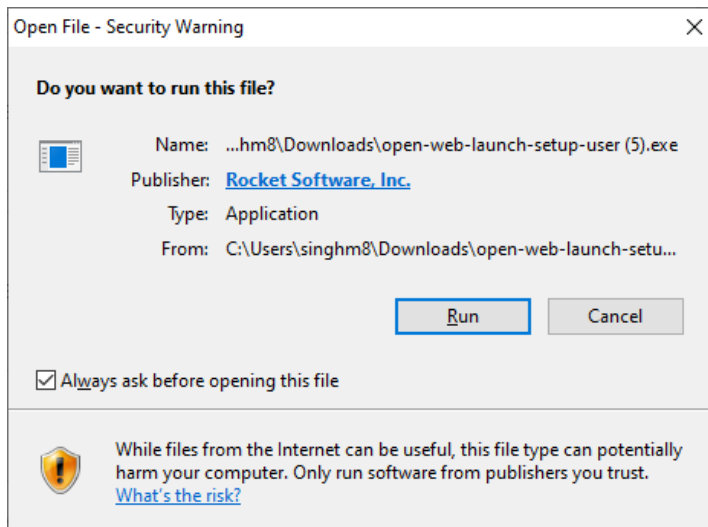
Cache Clear / Uninstall Rocket TE

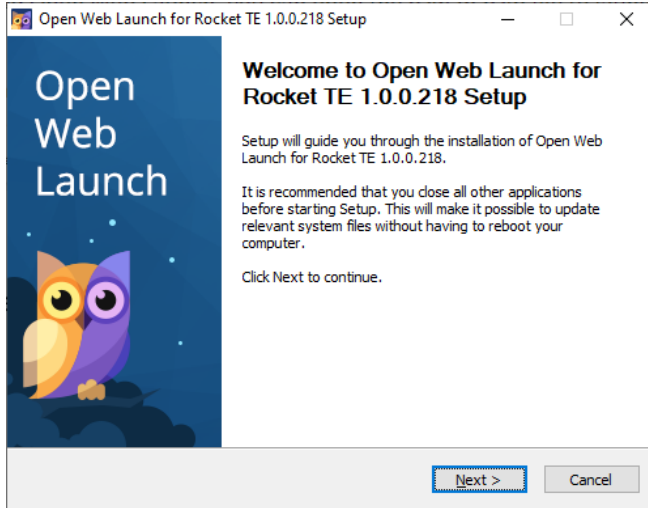
Download and run from this link : [eZClear](#).

If you cannot download or launch the bzw2h.bzlp file, contact your service provider.

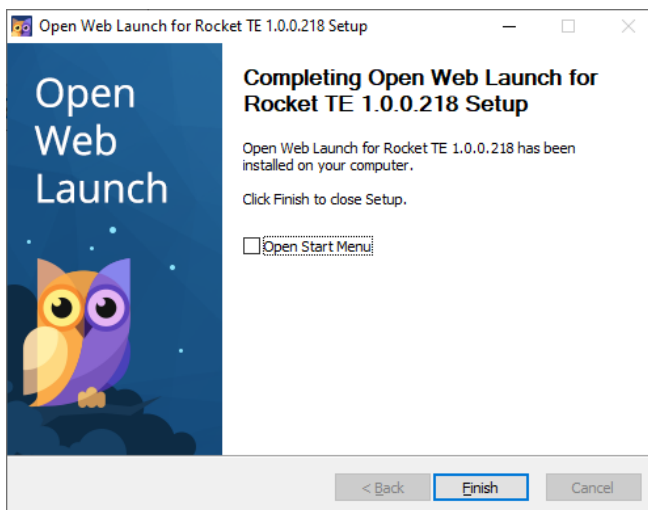
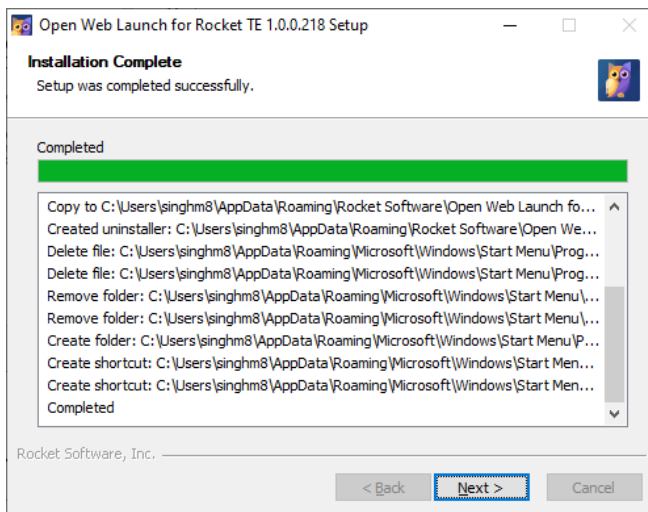
Step 3:

Next : Open the downloaded installer file : "[open-web-launch-setup-user.exe](#)" → It doesn't require admin privilege to install.





Click next on each panel and **finish the installation** :

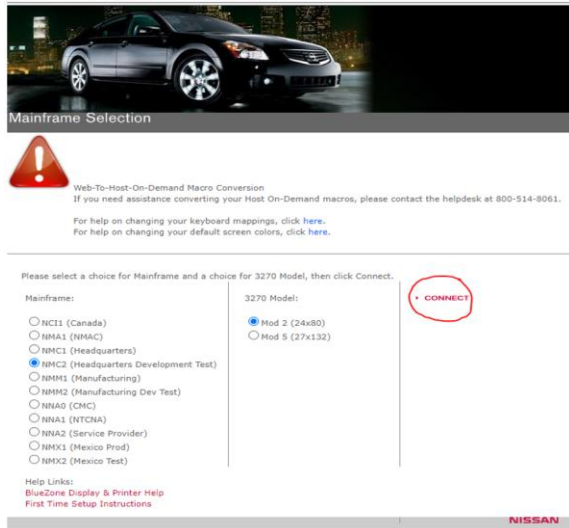




Step 4:

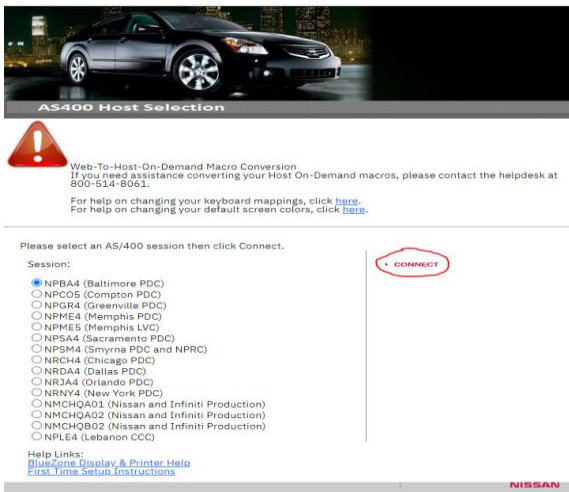
Now try to access the Bluezone v10 link again and download the launch file :

Web3270: <https://wth.web3270.bz.nissan-ix.com>



The screenshot shows the 'Mainframe Selection' screen. At the top, there is a car image and the text 'Mainframe Selection'. Below this is a warning icon and a message: 'Web-To-Host-On-Demand Macro Conversion. If you need assistance converting your Host On-Demand macros, please contact the helpdesk at 800-514-8061. For help on changing your keyboard mappings, click here. For help on changing your default screen colors, click here.' The main content area has the instruction 'Please select a choice for Mainframe and a choice for 3270 Model, then click Connect.' There are two columns of radio button options. The 'Mainframe' column includes options like NCI1 (Canada), NMA1 (NMAC), NMC1 (Headquarters), NMC2 (Headquarters Development Test), NMM1 (Manufacturing), NMM2 (Manufacturing Dev Test), NMA0 (CMC), NNA1 (NTCNA), NNA2 (Service Provider), NMX1 (Mexico Prod), and NMX2 (Mexico Test). The '3270 Model' column includes 'Mod 2 (24x80)' and 'Mod 5 (27x132)'. A red circle highlights the 'CONNECT' button on the right. At the bottom, there are 'Help Links' for 'BlueZone Display & Printer Help' and 'First Time Setup Instructions', and a 'NISSAN' logo.

Web5250: <https://wth.web5250-bz.na.nissan.biz>



The screenshot shows the 'AS400 Host selection' screen. At the top, there is a car image and the text 'AS400 Host selection'. Below this is a warning icon and a message: 'Web-To-Host-On-Demand Macro Conversion. If you need assistance converting your Host On-Demand macros, please contact the helpdesk at 800-514-8061. For help on changing your keyboard mappings, click here. For help on changing your default screen colors, click here.' The main content area has the instruction 'Please select an AS/400 session then click Connect.' There are two columns of radio button options. The 'Session' column includes options like NPBA4 (Baltimore PDC), NPC05 (Compton PDC), NPGR4 (Greenville PDC), NPME4 (Memphis PDC), NPME5 (Memphis LVC), NPSA4 (Sacramento PDC), NPSM4 (Smyrna PDC and NPRC), NRCH4 (Chicago PDC), NRDA4 (Dallas PDC), NRJA4 (Orlando PDC), NRNY4 (New York PDC), NMCHA01 (Nissan and Infiniti Production), NMCHA02 (Nissan and Infiniti Production), NMCHQB02 (Nissan and Infiniti Production), and NPLE4 (Lebanon CCC). A red circle highlights the 'CONNECT' button on the right. At the bottom, there are 'Help Links' for 'BlueZone Display & Printer Help' and 'First Time Setup Instructions', and a 'NISSAN' logo.

Step 5:

Next : Right click on the downloaded launch file from the browser and select the option :

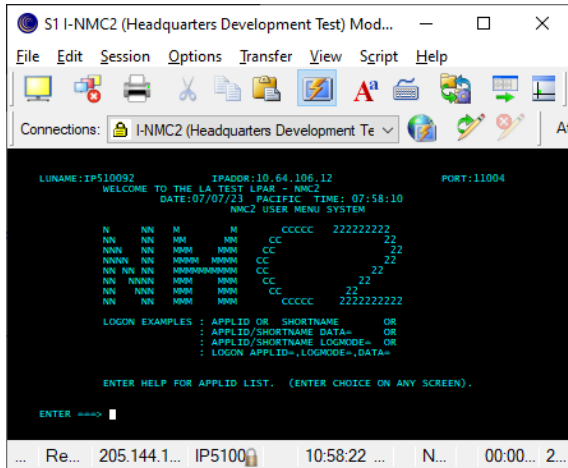
Always open files of this type.



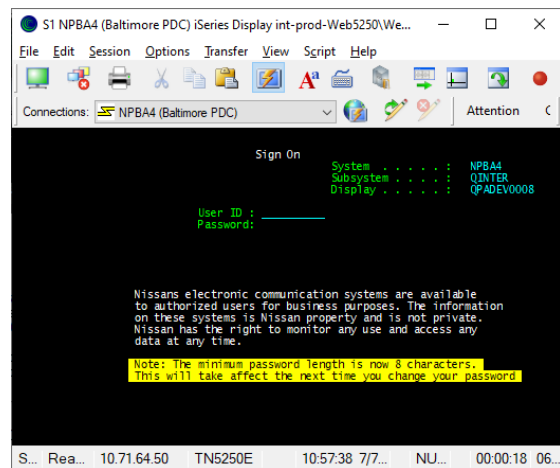
INFINITI.

Next : You can click and open the downloaded launch file : **bzw2h.bzlp** file and you could be able to view the selected regions / LPARs / Sessions.

Web3270



Web5250



Next time when you try to select any of the LPARs/ Sessions from BluezoneV10 screen, now you will be directly landing to the MainFrame screen without any issues.

Please note that **Step 5:** need to be performed for all the different browser that you want to use to launch the Bluezone sessions.

For any additional question or clarification needed, you can open a ticket with Nissan HelpDesk using : NNAISServiceDesk@Nissan-usa.com and assign to **TM-APPS-Bluezone-Support-T2.**

Feel free to connect to MukeshKumar.Singh@Nissan-Usa.Com for additional help.